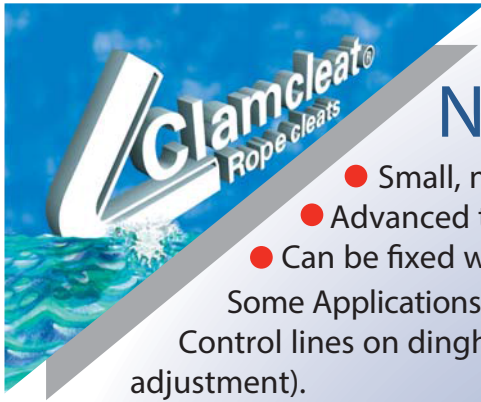


Micros cleat range Nylon and Aluminium



- Small, neat and lightweight for 1- 4mm $\frac{3}{64}$ " - $\frac{5}{32}$ " rope.
- Advanced tooth technology to hold all types of small rope.
- Can be fixed with standard screws and rivets, on tubular or flat surfaces.

Some Applications - Window blinds (cord control). Canoes (seat & rudder lines). Control lines on dinghies (Optimist booms & carbon tillers). Kitesurfing (5th line adjustment).

Open Cleat



Available soon

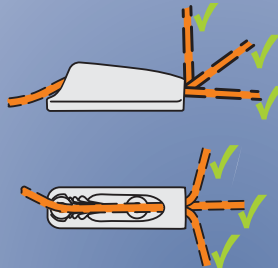
Aluminium or Nylon

Aluminium or Nylon.
 Compact to fit into small locations.
 Ideal when a rope is not always cleated.

Fairlead Cleat



Aluminium or Nylon



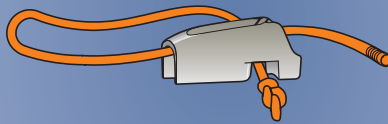
Fairlead strengthens cleat and allows quick fine adjustments of the rope.
 Helps hold rope into teeth when a line is flogging.



Fairlead Cleat with Becket



Aluminium only



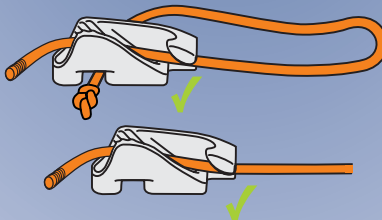
Large Becket makes it easy for frequent de-rigging.



Side entry Cleat with Becket



Aluminium only



Side entry cleats gives the benefit of a fairlead but use of temporary cleating.

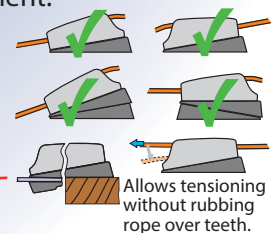


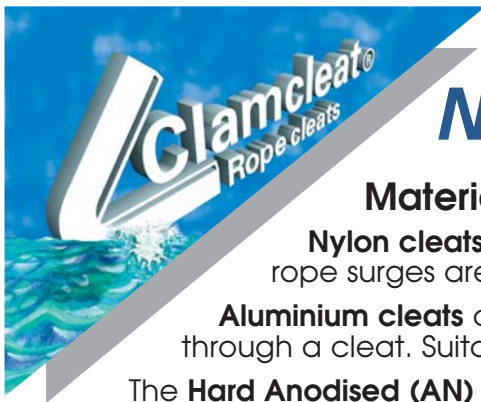
Tapered Pad allows correct rope/cleating alignment.

Cleats can be mounted either way round.

Pads can be stacked to increase angle or create a riser block.

Backplate provides support on thin deck sections.





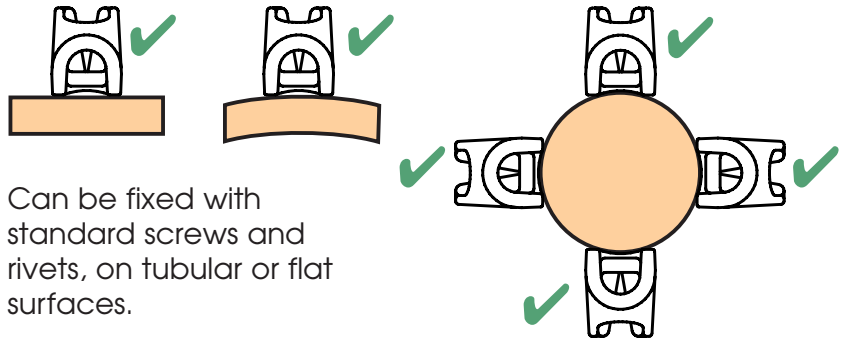
Micros cleat range Nylon and Aluminium

Material Selection

Nylon cleats offer very good value for money and are ideal where high loads or rope surges are not likely to be encountered.

Aluminium cleats are unaffected by the heat generated by a rope surging back through a cleat. Suitable for sub-zero temperatures. Good corrosion resistance.

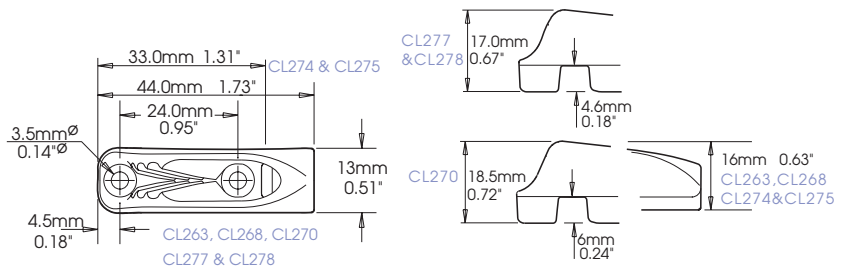
The **Hard Anodised (AN)** finish gives a high-tech and fashionable appearance as well as offering superior resistance to sea water corrosion.

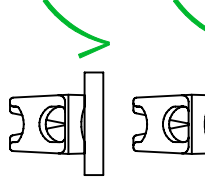
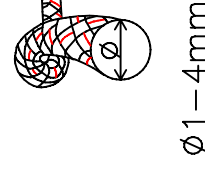
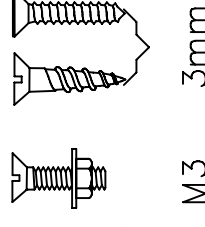
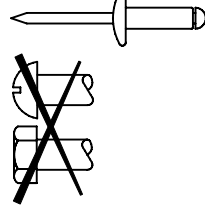


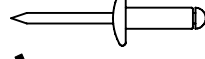

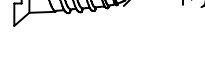
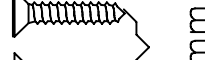


Can be fixed with standard screws and rivets, on tubular or flat surfaces.

Cleats for ropes to 4mm (5/32")

	mm Ø inch Ø	A B C	mm inch	mm Ø inch Ø	mm Ø inch Ø	mm Ø Gauge	Gms Ozs
CL263 & CL263W White Micros	1 - 4	Nylon A44 B24 C13	3.2	#4	3	5	0.2
	3/64-5/32	A13/4 B15/16 C1/2	1/8	1/8	No4		
CL268 & CL268AN Hard Anodised Racing Micros	1 - 4	Aluminium A44 B24 C13	3.2	#4	3	11	0.4
	3/64-5/32	A13/4 B15/16 C1/2	1/8	1/8	No4		
CL270 & CL270AN Hard Anodised Racing Micros with Becket	1 - 4	Aluminium A44 B24 C13	3.2	#4	3	13	0.5
	3/64-5/32	A13/4 B15/16 C1/2	1/8	1/8	No4		
CL274 & CL274W Open Micros	-	Nylon A33 B24 C13	3.2	#4	3	3	0.1
		A15/16 B15/16 C1/2	1/8	1/8	No4		
CL275 & CL275AN Open Racing Micros	-	Aluminium A33 B24 C13	3.2	#4	3	7	0.25
		A15/16 B15/16 C1/2	1/8	1/8	No4		
CL277 & CL277AN Hard Anodised Side entry Racing Micros with Becket (Starboard)	1 - 4	Aluminium A44 B24 C14	3.2	#4	3	11	0.4
	3/64-5/32	A13/4 B15/16 C9/16	1/8	1/8	No4		
CL278 & CL278AN Hard Anodised Side entry Racing Micros with Becket (Port)	1 - 4	Aluminium A44 B24 C14	3.2	#4	3	11	0.4
	3/64-5/32	A13/4 B15/16 C9/16	1/8	1/8	No4		
CL823 Tapered Pad for CL263, CL268, CL270, CL277 & CL278	-	Polypropylene A47 B - C19	3.2	#4	3	4	0.15
		A113/16 B - C3/4	1/8	1/8	No4		

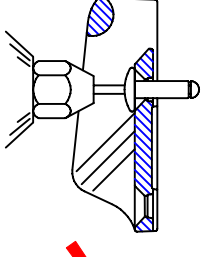




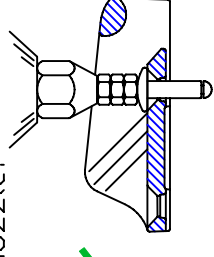
     

M3 3mm No.4
 #4 (1/8") No.4
 Ø1-4mm
 3/64"-5/32"

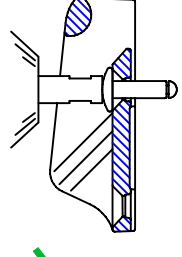
Standard rivet gun nozzles do not fit inside cleat.



Use 2 or 3 nuts to extend nozzle.

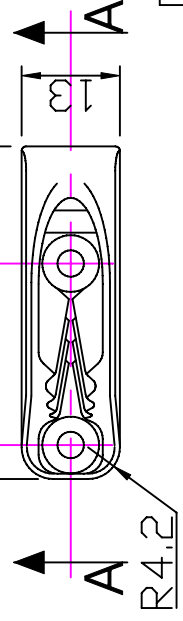
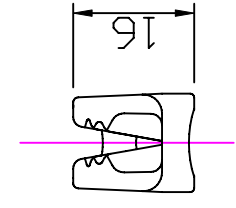
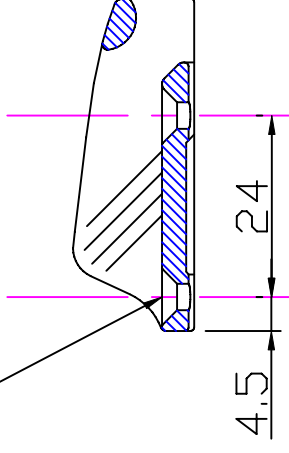
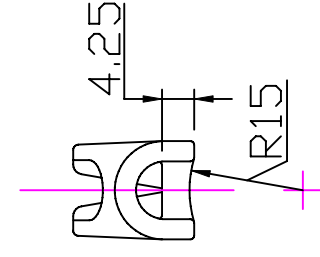


Extended nozzle is best. Consult rivet gun supplier.



Section 'AA'

2 Holes $\phi 3.5$
countersunk $\phi 7.5 \times 90^\circ$.



Clamcleats Limited
 Watchmead
 Welwyn Garden City
 Hertfordshire AL7 1AP
 England
 Telephone +44 (0)1707 330101
 Fax +44 (0)1707 321269
 www.clamcleat.com



Scale 1:1
All dimensions in mm.

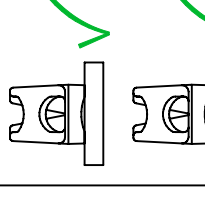
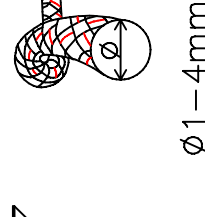
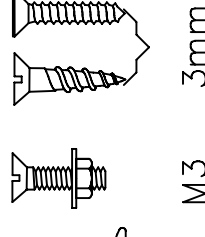
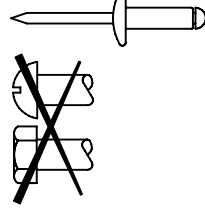
Issue: 3 February 2007
ID263.dwg

Material: Nylon

Installation Drawing for: -

CL263

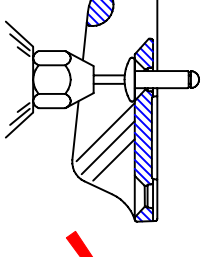
Micros



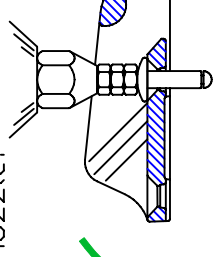
M3 3mm No.4
#4 (1/8")

Ø1-4mm
3/64"-5/32"

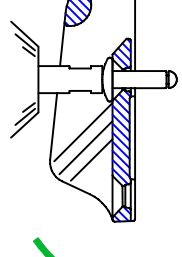
Standard rivet gun nozzles do not fit inside cleat.



Use 2 or 3 nuts to extend nozzle.

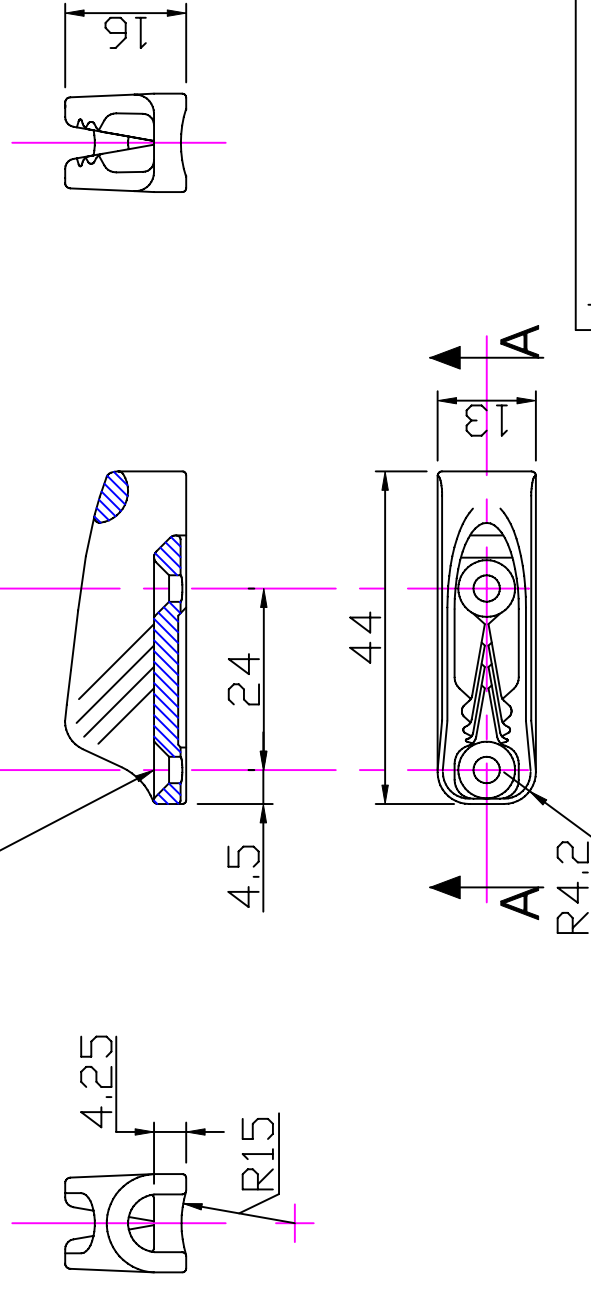


Extended nozzle is best. Consult rivet gun supplier.



Section 'AA'

2 Holes Ø3.5
countersunk Ø7.5x90°



Clamcleat®
Rope cleats

Clamcleats Limited
Watchmead
Welwyn Garden City
Hertfordshire AL7 1AP
England

Telephone +44 (0)1707 330101
Fax +44 (0)1707 321269
<http://www.clamcleat-rope-cleats.com>



Scale 1:1

All dimensions in mm.

Issue: 1 June 2006
ID268.dwg

Material:
Diecast Aluminium
Installation Drawing for: -

CL268

Racing Micros



Mk2 Junior cleat range Nylon and Aluminium

- Small, neat and lightweight for 3 - 6mm 1/8" - 1/4" rope.
- Advanced tooth technology to hold all types of small rope.
- Can be fixed with standard screws and rivets, on tubular or flat surfaces.

Some Applications - Window blinds (cord control). Canoes (seat & rudder lines). Control lines on dinghies. Kitesurfing (Brake Line adjustment).

Open Cleat



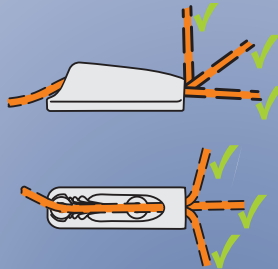
Aluminium or Nylon

Compact to fit into small locations. Ideal when a rope is not always cleated.

Fairlead Cleat



Aluminium or Nylon

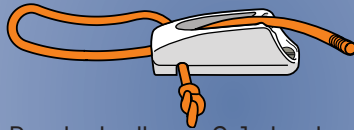


Fairlead strengthens cleat and allows quick fine adjustments of the rope. Helps hold rope into teeth when a line is flogging.

Fairlead Cleat with Becket



Aluminium only



Becket allows 2:1 rigging.

Side entry Cleat



Aluminium only

1. Rope runs free
Keeper is closed to stop rope going into cleat teeth

2. Pull rope back and down to cleat
Keeper opens to allow rope into teeth

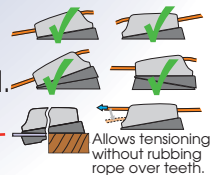
3. Rope gripped
Keeper holds rope in cleat

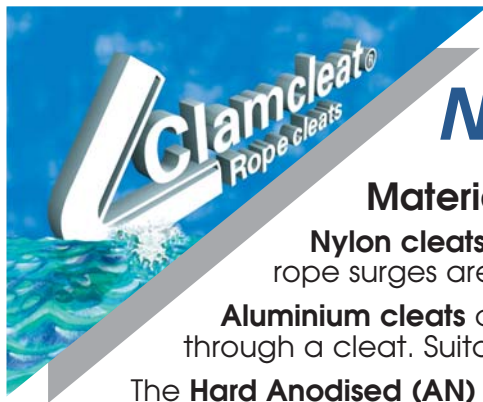
4. Lift up to release
Keeper opens to allow rope out of teeth



Cage allows easy cleating at extreme angles.

Tapered Pad allows correct alignment. Cleats can be mounted either way round. Backplate provides support on thin deck sections.





Mk2 Junior cleat range Nylon and Aluminium

Material Selection

Nylon cleats offer very good value for money and are ideal where high loads or rope surges are not likely to be encountered.

Aluminium cleats are unaffected by the heat generated by a rope surging back through a cleat. Suitable for sub-zero temperatures. Good corrosion resistance.

The **Hard Anodised (AN)** finish gives a high-tech and fashionable appearance as well as offering superior resistance to sea water corrosion.



CL204

CL204W



CL222

CL222AN



CL272

CL272W

Available soon



CL211Mk2

CL211Mk2AN



CL211Mk2/S2

CL211Mk2/S2AN



CL217Mk2AN

CL217Mk2



CL218Mk2



CL218Mk2AN

CL815

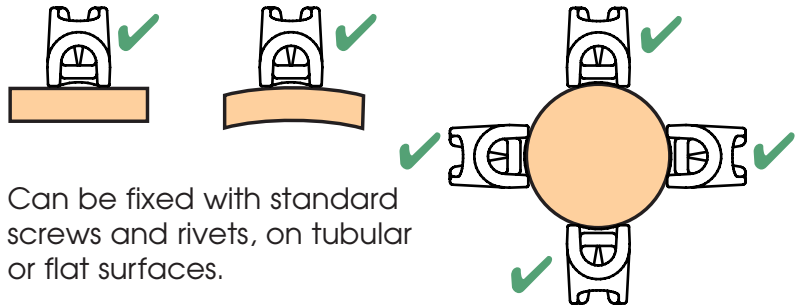


CL817



CL819

CL802

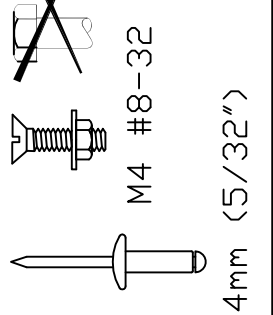
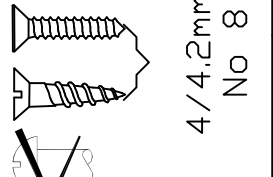
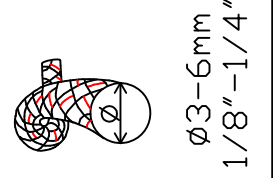
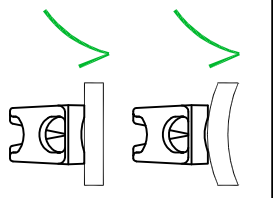


Can be fixed with standard screws and rivets, on tubular or flat surfaces.

Cleats for ropes to 6mm (1/4")

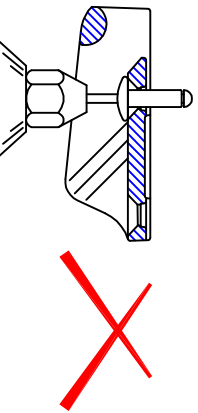
	mm Ø inch Ø	A B	C	mm inch	mm Ø inch Ø	mm Ø inch Ø	mm Ø Gauge	Gms Ozs
CL204 & CL204W White Mini	3 - 6 1/8-1/4	Nylon A52 B36 C17	A2 1/16 B17/16 C11/16	3.2 1/8	#8 5/32	4.2 No8	9 0.3	
CL211 Mk2 & CL211 Mk2AN Hard Anodised Racing Junior Mk2	3 - 6 1/8-1/4	Aluminium A55 B27 C17	A2 1/8 B1 1/16 C11/16	3.2 1/8	#8 5/32	4.2 No8	21 0.8	
CL211Mk2/S2 & CL211Mk2AN/S2 Hard Anodised Racing Junior Mk2 with Becket	3 - 6 1/8-1/4	Aluminium A55 B27 C17	A2 1/8 B1 1/16 C11/16	3.2 1/8	#8 5/32	4.2 No8	21 0.8	
CL217 Mk2 & CL217 Mk2AN Hard Anodised Side entry (Starboard)	3 - 6 1/8-1/4	Aluminium A55 B27 C17	A2 1/8 B1 1/16 C11/16	3.2 1/8	#8 5/32	4.2 No8	24 0.8	
CL218 Mk2 & CL218 Mk2AN Hard Anodised Side entry (Port)	3 - 6 1/8-1/4	Aluminium A55 B27 C17	A2 1/8 B1 1/16 C11/16	3.2 1/8	#8 5/32	4.2 No8	24 0.8	
CL222 & CL222AN Hard Anodised Racing Mini	3 - 6 1/8-1/4	Aluminium A48 B36 C15	A1 7/8 B17/16 C5/8	3.2 1/8	#8 5/32	4.2 No8	16 0.6	
CL272 & CL272W White Nylon Mk2 Junior	3 - 6 1/8-1/4	Nylon A55 B27 C17	A2 1/8 B1 1/16 C11/16	3.2 1/8	#8 5/32	4.2 No8	12 0.4	
CL815 Keeper for CL211 Mk2, CL211 Mk2AN, Mk2/S2, CL211 Mk2AN/S2 & CL272	3 - 6 1/8-1/4	Acetal A - B - C -		3.2 1/8	#8 5/32	4.2 No8	9 0.3	
CL817 Cage for CL211 Mk2, CL211 Mk2AN & CL272 Requires CL815 Keeper	-	Nylon & Stainless steel A - B - C -		-	-	-	23 0.8	
CL802 Tapered Pad for CL204 & CL222	3 - 6 1/8-1/4	Polypropylene A 57 B - C21	A2 1/4 B - C13/16	3.2 1/8	#8 5/32	4.2 No8	4 0.1	
CL819 Tapered Pad for CL211 Mk2, CL217 Mk2, CL218 Mk2, CL211 Mk2/S2 & CL272	3 - 6 1/8-1/4	Polypropylene A60 B27 C23	A2 3/8 B1 1/16 C29/32	3.2 1/8	#8 5/32	4.2 No8	8 0.3	

Notes: -
 For marine applications, use a silicone sealant or a bedding compound to avoid electrolytic action between the cleat and metal fastenings.

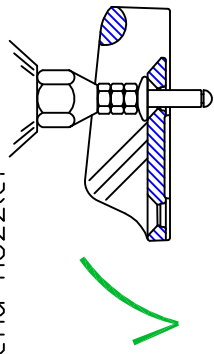


M4 #8-32
 4mm (5/32")
 4/4.2mm ϕ 3-6mm
 No 8 1/8"-1/4"

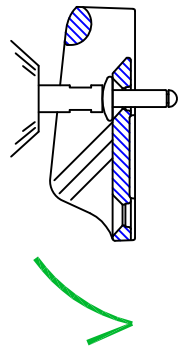
Standard rivet gun nozzles do not fit inside cleat.



Use 2 or 3 nuts to extend nozzle.

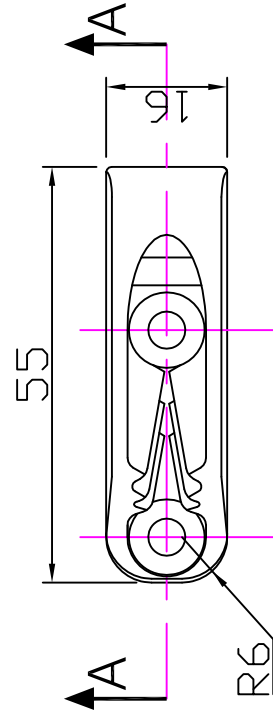
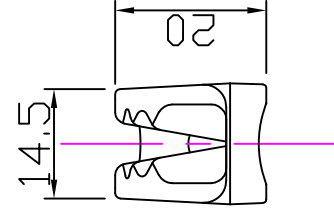
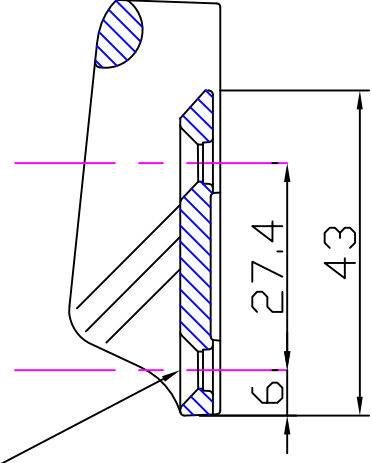
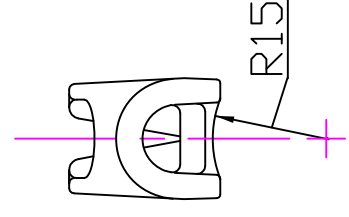


Extended nozzle is best. Consult rivet gun supplier.



Section 'AA'

2 Holes ϕ 4.9
 countersunk ϕ 10.0x90°



Clamcleat
 Rope cleats
 Clamcleats Limited
 Watchmead
 Welwyn Garden City
 Hertfordshire AL7 1AP
 England
 Telephone +44 (0)1707 330101
 Fax +44 (0)1707 321269
 Email sales@clamcleat.com
 www.clamcleat.com



Scale 1:1
 All dimensions in mm.

Issue: 7 April 2010
 ID2112.dwg

Material:
 Diecast Aluminium
 Installation Drawing for: -

CL211 MK.2
 Mk2 Racing Junior