



## Model 2092 TWO STATION TWO LEVER CONTROL

The 2092 master control head features a pull-out handle for overriding throttle. All control models are entirely made of die-cast silicon bronze and stainless steel hardware and are backed up with our five year warranty.

The maximum clutch stroke of this unit is 2-3/4" (70 mm) and the maximum throttle stroke is 2-5/8" (67 mm). Various connection points are available to provide the position for correct travel for your engine and gear.

The remote control head to pair with this model is our Model 2094.

### Letter Code Designations:

- H - with one neutral safety switch
- K - with chrome finish cover and handle
- L - with polished brass finish cover and handle
- M - with black epoxy finish cover and chrome handle
- U - curved handle
- Y - T-bar handle
- Z - with riveted metal labels

### Example:

2092-KYZ is a twin engine master control with chrome finish (K), T-bar handle (Y) and riveted label (Z).

*US Patent 4453428, 4280371  
Canada Patent 1158136*

### NOTE:

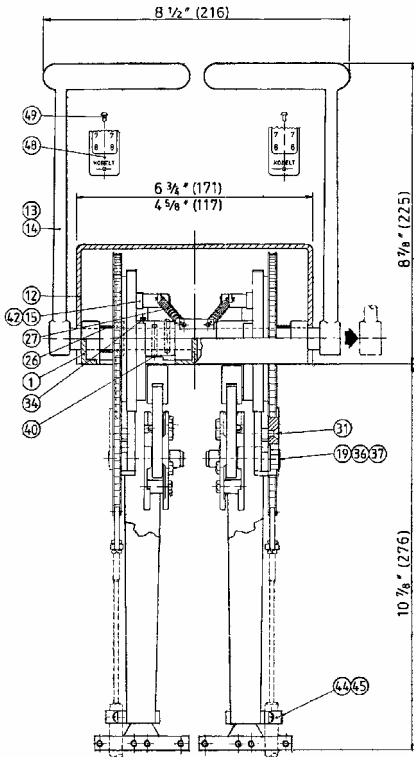
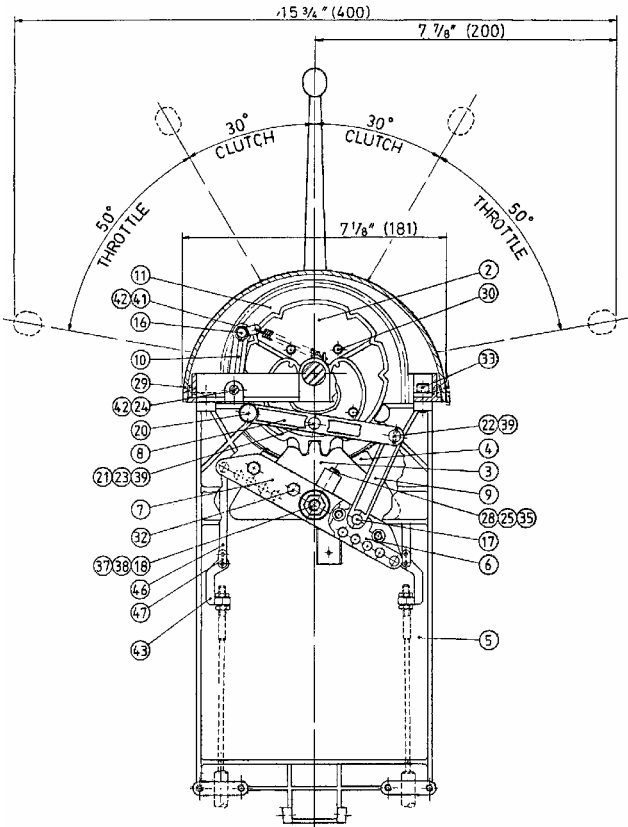
Two cables per engine are required for interconnecting the master and remote station. These are 47 series pull/pull cables and are available in even foot lengths from 8 to 30 feet. Control heads include all necessary parts to attach cables from the master station to the remote station

Adapter kits to connect clutch and throttle cables to the master control are ordered as follows:

- 2092-0901 for 30 series cables
- 2092-0902 for 40 series cables.

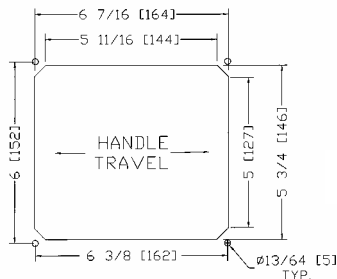
# DIMENSIONS AND PARTS LIST

## Model 2092



All Dimensions in inches (mm)

ITEM	QTY	PART NUMBER	DESCRIPTION
1	1	2092-0001	Frame
2	2	2090-0002	Centre Cam
3	2	2090-0003	Clutch Pivot Plate
4	2	2090-0004	Retainer Plate
5	2	2090-0005	Support
6	2	2090-0006	Throttle Pivot Plate
7	2	2090-0007	Retainer Plate
8	2	2090-0008	Link No. 1
9	2	2090-0009	Link No. 2
10	2	2090-0010	Detent Lever
11	2	2090-0011	Chain Sprocket
12	1	2092-0002	Dome
13	2	2090-0019	Handle (T-bar)
14	2	2090-0020	Handle (curved)
15	2	2090-0013	Detent Roller
16	2	2090-0014	Snap Ring Pin
17	2	2090-0015	Pin
18	2	2046-0016	Throttle Bushing
19	2	2046-0017	Clutch Bushing
20	2	2046-0018	Shoulder Bolt
21	2	2046-0023	Pin
22	2	2046-0024	Pin
23	2	2046-0027	Throttle Roller
24	1	2090-0018-L	Snap Ring Pin
25	2	1201-0002	Spring
26	2	1201-0150	Spring
27	2	1202-0005	Spring
28	2	2542-0008	Friction Pad
29	2	1011-0808	Oval Hd Screw
30	8	1009-0804	Flat Hd. Screw
31	6	1009-0808	Flat Hd. Screw
32	8	1001-0808	Hex Hd Cap Screw
33	8	1002-1010	Socket Hd Cap Screw
34	2	1016-0804	Set Screw
35	2	1016-1204	Hex Socket Cap Screw
36	2	1001-1136	Hex Hd Cap Screw
37	4	1023-0237	Flat Washer
38	2	1022-0311	Lock Nut
39	4	1024-0510	Spring Pin
40	4	1024-0816	Snap Ring
41	2	1029-2025	Snap Ring (crescent)
42	4	1029-1025	Snap Ring
48	2	2050-0026	Label
49	4	1032-0304	Rivet
43	4	2090-0012	Cable-chain Connector
44	4	2108-0002	Cable Clamp
45	8	1010-0810	Round Hd Screw
46	2	2090-0016	Chain
47	4	2090-0017	Connecting Link



Cut-out Dimensions



## Model 2094 Remote Control

Used in a twin engine two-station system, Model 2094, the Remote Control for 2092, is of the same rugged design as the main control, which is made of die cast silicon bronze and stainless steel hardware and is backed with our usual warranty. This head, while slightly narrower than the 2092 master control, comes with all the hardware necessary to mount the interconnecting cables.

The cable used to interconnect the control heads or stations (2092-2094) must be pull-pull cables known as the 47 series cables.

The push-pull control cable between the main station 2092 and the clutch and throttle should be connected before the interconnecting pull-pull cable is installed.

### Letter Code Designation:

- K – with chrome finish cover and handle
- L – with polished brass finish cover and handle
- M – with black epoxy finish cover and chrome handle
- U – curved handle
- V – T-bar handle with black plastic grip
- X – short handle
- Y – T-bar handle
- Z – with riveted metal labels

### Example:

2094-KYZ is a single engine remote control with chrome finish, T-bar handle and riveted label.

**NOTE:** Two cables per engine are required for interconnecting the master (model 2092) and remote control (model 2094). These 47 series pull-pull cables are available in even foot lengths.

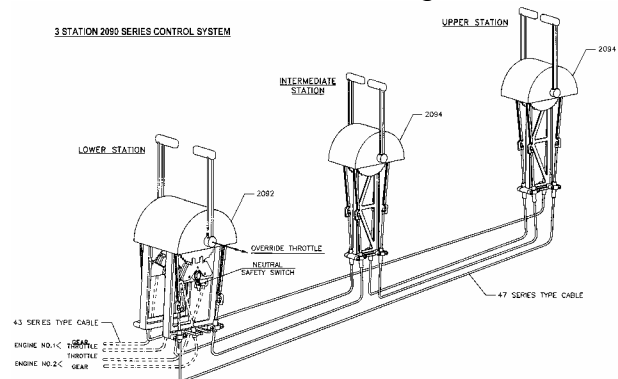
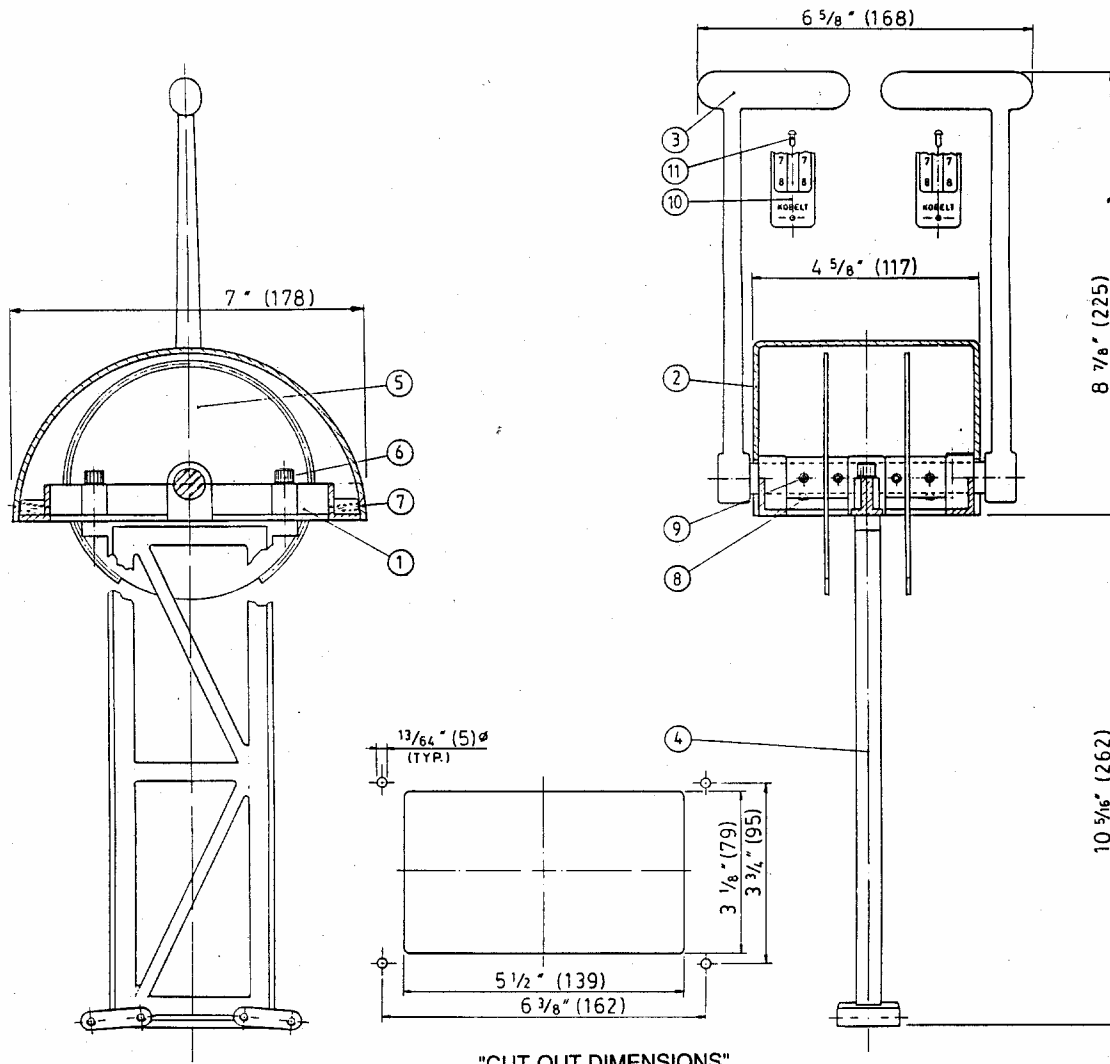


Diagram showing cable connection between stations.

# MODEL 2094



"CUT-OUT DIMENSIONS"

All dimensions in inches (mm)

Item	Quantity	Part Number	Description
1	1	2012-0001	Frame
2	1	2012-0002	Dome
3	2	2011-0003	Handle (T-bar)
4	1	2093-0001	Support
5	2	2093-0002	Sprocket
6	2	1002-1020	Hex Socket Hd Cap Screw
7	2	1011-0808	Oval Hd Mach. Screw
8	2	1016-0804	Hex Socket Set Screw
9	4	1024-0816	Spring Pin
10	2	2050-0226	Label
11	4	1032-0304	Rivet