



## Instructions for use of SECUMAR life jackets

### Contents:

1. Important information
2. Important information concerning life jackets with Lifebelt / Harness
3. Inflation device check before use (quick check)
4. Life jacket check before each season / extended cruises
5. Putting on the life jacket
6. Inflating the life jacket
7. Handling after use
8. Interim replacing of the tablet
9. Replacement of tablet
10. Packing the life jacket
11. Storage
12. Maintenance / lifetime

### 1. Important information

A life jacket is a tool for providing protection against drowning. It does not provide any guarantee of rescue or survival. Before use, read the instructions for use and the product information carefully. Note the information on the life jacket.

Please note that the life jacket is a fully functional buoyancy aid only after complete inflation.

The life jacket is only suitable for temperatures above -10°C. In temperatures around 0°C there may be a certain delay in response, the response time may more than double in temperatures down to -10°C!

ATTENTION: Compressed gas cartridges are dangerous. Keep away from children, only use as per specifications.

When jumping into the water, cross the arms over the life jacket to avoid injury and damage, in particular if the life jacket is already inflated. Avoid jumps from a height of more than 3 m.

If you wear additional weights, buoyant devices or your clothing caused buoyancy, the function of the life jacket may be adversely affected.

Test your life jacket in a swimming pool to become familiar with the function and the behaviour in water. Instruct your children.

For children under 6 years, only use fully automatic life jackets. Don't use a life jacket as a pillow.

Your life jacket is provided with a twin tone whistle. In an emergency, you can use it for calling help.

A lifting becket (marked LIFT or red webbing) facilitates the recovery of a person from the water.

Life jackets according to SOLAS are provided with two buoyancy chambers. One chamber is inflated, as a standard, via the fully automatic inflation device. The other chamber is a backup chamber which can be activated manually if required. Each life jacket according to SOLAS must be provided with an approved light.

### 2. Important information concerning life jackets with integrated Lifebelt / Harness

The Lifebelt / Harness integrated in the life jacket is designed for preventing the user from going overboard. It is not a fall arrest device!

The harness is suitable for persons of a height of approx. 150 cm or taller. The lower end of the chest strap must rest

on the lower costal arch of the ribcage or higher. The D-ring should be positioned between the lower edge of the breastbone and the armpit. Ensure that the chest strap is fitted at this height after adjusting the harness.

Do not use the harness if the chest strap is positioned below the rib cage!

Warning: The harness is designed only for securing persons on a boat deck. Using the device contrary to the recommendations may result in fatal injuries.

The harness is designed with a great safety reserve to meet the requirements. For this reason, make sure you choose suitable fixing points on board. Harnesses and lines may transfer very high loads on the attachment points. Attachment points must withstand loads of more than 1 t. The guard rail and steering column are normally not suitable. Secure yourself using a CE-tested Lifeline from SECUMAR.



### 3. Check of inflation device before use (quick check)

Each time before you put on the life jacket, check the operational readiness of the inflation device(s). To that end, open the life jacket at the Velcro fastener or zipper and/or check the inflation device through the inspection window.

1 Gas cartridge (CO<sub>2</sub>) full?

Unscrew the cartridge and check it is unmarked (see Figure 1). If the mouth is damaged, replace the gas cartridge with a new original SECUMAR spare cartridge. Screw the cartridge in again until the inspection window shows fully green, then do not turn it any further.

2 All indicators green?

SECUMATIC 3001S (see Figure 2)

A=manual release lever secured?

B=Automatic tablet present?

C=Cartridge screwed in correctly?

SECUMAR 301SM (see Figure 3)

A=manual release lever secured?

B=Cartridge screwed in correctly?

If all indicators are green and the cartridge is full, the inflation device is operational, otherwise it must be made ready as described in Chapter 8.

Repeat this inspection with the second inflation device of your life jacket, if applicable.

After checking the inflation device and making it ready again, if necessary, close the protection cover and make sure the pull-cord for manual release hangs out freely from the protection cover.

### 4. Check of life jackets before each season/extended cruises

Open the press studs, Velcro fasteners or zippers of the life jacket and unfold the buoyancy chamber.

Inflate the buoyancy chamber via the oral valve fully (also refer to Chapter 6) and allow it to rest for approx. 16 hours. If the buoyancy chamber is still full after this time, it is ok.

If your life jacket is provided with a second buoyancy chamber (e.g. SOLAS jackets), repeat this and the following steps for the second chamber.

- Oral valve functioning?

Remove the dust cap and check the valve insert for operational readiness using inverted dust cap or the nose of the dust cap see Figure 4. After pressing down the oral valve with the dust cap and withdrawing it, the valve must close completely. Install the dust cap again.

- Protection cover and straps undamaged?

Check the protection cover, webbing and fittings for damage and the existing accessories for completeness. If the CLICK buckle does not close smoothly, apply some Teflon spray to make it operational again.

Taking the life jacket out of service may be necessary, for example, if the strength of the fabric and the straps is reduced by prolonged UV impact. This applies in particular to life jackets with an integrated harness!

Life jackets with integrated harness must be taken out of service (e.g. after a fall or chemical impact).

- Gas cartridge (CO<sub>2</sub>) o.k.?

Replace empty and corroded/rusty gas cartridges with new original SECUMAR spare cartridges.

Should you find any defects during the inspection, take your life jacket to the SECUMAR SERVICE for maintenance in any case (via authorized dealer or directly to manufacturer).

### 5. Putting on the life jacket

Always wear the life jacket on top of your clothing. Open the buckle and put on the life jacket like a normal jacket or pull over head in the case of closed models see Figures 6 and 7. Close buckle safely. Also refer to supplementary operating instructions. Never wear the life jacket unfastened!

Adjust the body belt such that there is approx. 2 cm space (two fingers) between your body and the belt. Only a tightly fitting life jacket will keep you in a stable position on your back.

If applicable, close the crotch strap and adjust it so that it fits comfortably.

WARNING: Wearing the life jacket loosely or unfastened is dangerous.

### 6. Inflating the life jacket

Life jackets with SECUMATIC 3001S automatic inflation device:

When the user jumps into the water, the life jacket is inflated fully automatically. Out of the water or if fully automatic inflation fails, the inflation process can be started by pulling the pull-cord firmly.

Life jackets with SECUMAR 301SM manual inflation device: The inflation process is released by pulling the pull-cord firmly.



Inflating via oral valve (tightness check) / refilling air: Open the life jacket manually and blow up the buoyancy chamber via the mouth valve. To that end pull off the dust cap from the mouth valve. When refilling air via the mouth valve, avoid breathing in CO<sub>2</sub> gas from the buoyancy chamber (non-toxic, but may cause coughing or dizziness).

## 7. Handling after use / making jacket ready for use again

- Cleaning the life jacket.

Allow moist or wet life jacket to dry on a hanger or hang from the neck part. Do not dry on a heating radiator! Remove oil and grease immediately. Clean using a standard commercial gentle washing detergent or mild soapsuds. Rinse with clean water in any case. Note the care information on the life jacket.

Do not use any alcohol or solvent containing cleaning agents!

- Releasing air via the oral valve.

To release the air, remove the oral valve dust protection cap. Press down the valve with the inverted dust cap or with the nose of the dust cap (never use pointed objects). Press out the air to empty the buoyancy chamber completely. After emptying the buoyancy chamber, reinstall the dust cap see Figure 4.

## 8. Making inflation device ready again (re-arming)

After each use involving the inflation of the life jacket, the inflation device must be made ready for use again. To do that, you will need an original SECUMAR spares package (re-arming kit).

Automatic inflation device SECUMATIC 3001S (see Figure 7)

- Unscrew empty cartridge from inflation device and dispose of it.
  - Fold out side lever until it engages. Warning: High spring loads!
  - Fold manual release lever into case and secure with new pin (if necessary).
  - Insert new original SECUMAR automatic tablet in tablet compartment. If necessary, blow out any residues of the old tablet, do not use any tools! For easier insertion, you may press the lever a bit up over the attachment point. Warning: Enclosure and hands must be dry! Never insert any objects other than an original SECUMAR automatic tablet!
  - Fold down side lever again.
  - Screw new full CO<sub>2</sub> spare cartridge in until the inspection window C shows fully green, then do not turn it any further. The size required (in g weight) is imprinted on the buoyancy chamber.
- If all indicators A, B and C are green, the life jacket is operational again.

Manual inflation device SECUMAR 301SM (see Figure 8)

- Unscrew empty cartridge from inflation device and dispose of it.
- Fold manual release lever into case and secure with new clip.
- Screw new full CO<sub>2</sub> spare cartridge in until the inspection window B shows fully green, then do not turn it any further. The size required (in g weight) is imprinted on the buoyancy chamber.

If all indicators A and B are green, the life jacket is operational again.

## 9. Replacing the tablet

To replace the tablet (e.g. after use in environments with high atmospheric moisture), please refer to the instructions for making the inflation device ready for use again (Chapter 8).

Please note: Always remove the CO<sub>2</sub> cartridge before actuating the tensioning lever.

## 10. Packing the life jacket

Release all air from the buoyancy chamber (see Chapter 7). Close the oral valve with the dust cap (see Chapter 4).

Fold up life jacket following the instructions on the supplied product information. Ensure that the inflation device is not „wrapped up“. The buoyancy chamber must not be twisted. The white retaining straps must not be pulled together! Close all press studs, Velcro fasteners and zippers carefully. The manual release pull-cord must hang out of the protection cover freely and be accessible. The straps must not be twisted or knotted.



## 11. Storage

Before storage, the life jacket must be fully dry. For this reason, open the protection cover to allow the life jacket to dry on the inside, too. Protect your life jacket from prolonged exposure to the sun.

To prevent unwanted early release of the automatic inflation device caused by condensation, store the jacket at a well ventilated place.

## 12. Maintenance / lifetime

Have your life jacket serviced by the SECUMAR SERVICE regularly. Service is due on the date indicated on the SERVICE label (recommendation, other regulations may have to be complied with). The year is indicated in the middle (A), the month is indicated at the edge of the label (see Figure 9).

If the label is missing, have service carried out in any case. Service can only be carried out with life jackets which have not yet exceeded their maximum service life. Generally, the service life is 10 years (refer to supplied product information).

In certain conditions of use (e.g. long cruises, cruises to other climatic zones, or frequent wearing by children) the life jacket must be serviced more frequently. Children's life jackets must be checked by the responsible person (parent or trainer) with particular care due to the special usage conditions. Ask the manufacturer for special instructions.

## 13. Handling of optional SECUMAR accessories

### Spray hood

The spray hood protects you against surf and thermal loss via the head. The spray hood is fixed in the neck of the life jacket and in the neck area once the buoyancy chamber is inflated.

Take the spray hood behind your head and put it on like a normal hood. Tension the spray hood by sliding the elastic cord over the inflated buoyancy chamber. When packing the life jacket, stow away the spray hood in the neck part of the protection cover.

**WARNING:** The spray hood must not be wrapped around the buoyancy chamber!

### Sea distress light

The SECULUX sea distress lights are activated by water (both fresh and salt water). To activate the light, the contacts must be in the water. In some models, the light can be deactivated manually (e.g. at daybreak).

When testing your life jacket, we recommend removing the light before to prevent the light from being activated automatically.

Mount the sea distress light at the highest point of the buoyancy chamber of your life jacket when in water. In the case of SECUMAR life jackets, a fixing attachment is provided on the buoyancy chamber.

When inspecting the life jacket, note the expiry date of the battery and check if the battery is in any way swollen. In both cases replace the complete light.

### Crotch strap

The crotch strap enables fine adjustment of the jacket, especially when it is already inflated in the water. This optimizes the distribution of buoyancy and ensures that the head is kept out of the water safely. The crotch strap is fixed to the loops provided for this purpose using shackles and can be opened / closed in daily use via a snap fastener.

### Lifeline

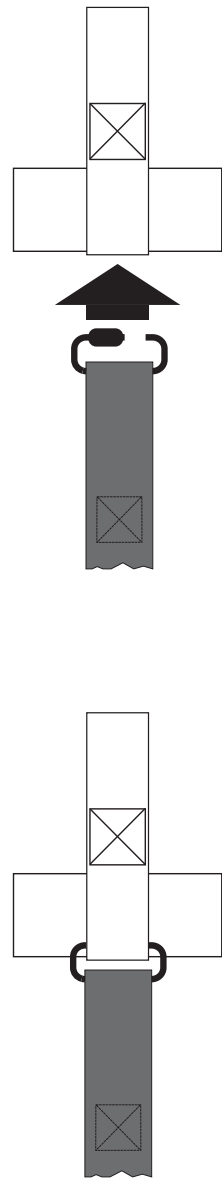
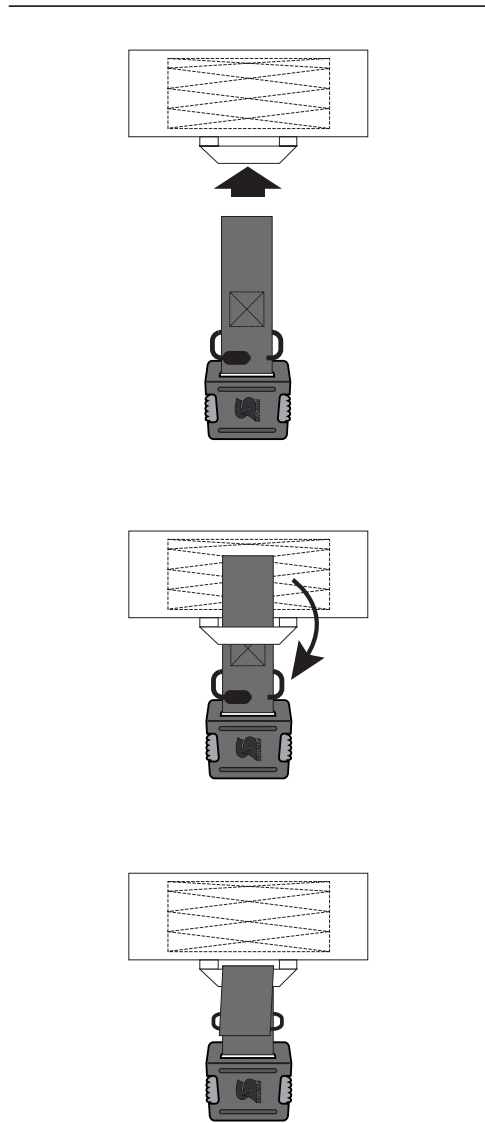
With a SECUMAR Lifeline you can hook yourself to an attachment point on the boat and, in combination with a harness, you will be connected safely to the boat. Only use lifelines and harnesses according to EN 1095 and DIN EN ISO 12401 (also refer to Chapter 2 of these instructions).

### Manual override

If the manual override is inserted, the function of the SECUMATIC 3001S automatic inflation device is restricted to semi-automatic operation. That means, if the manual override is activated, the life jacket can only be inflated by pulling the release handle (see Figure 10).



## Schrittgurt Crutch strap



TN14750-10/11



## Automatiksperrung für SECUMATIC 3001S Vers.-Nr.: 4220-12-358-6359

### Achtung:

Durch die Verwendung der Automatiksperrung wird die Funktion der automatischen Aufblasvorrichtung **SECUMATIC 3001S** auf halb-automatischen Betrieb beschränkt. Das heißt, das Aufblasen der Rettungsweste kann damit ausschließlich durch Ziehen am Auslösegriff ausgeführt werden.

### Note:

By using the manual override, the functionality of the automatic inflation device **SECUMATIC 3001S** is limited to semi-automatic operation, i.e. to actuate inflation of the lifejacket you must pull on the manual release cord.

### Attention:

Si vous utilisez le kit de blocage, la fonction du dispositif de gonflage automatique **SECUMATIC 3001S** sera réduite à la fonction semi-automatique. Cela veut dire que le gonflage du gilet de sauvetage pourra être uniquement effectué en tirant le cordon de déclenchement manuel.

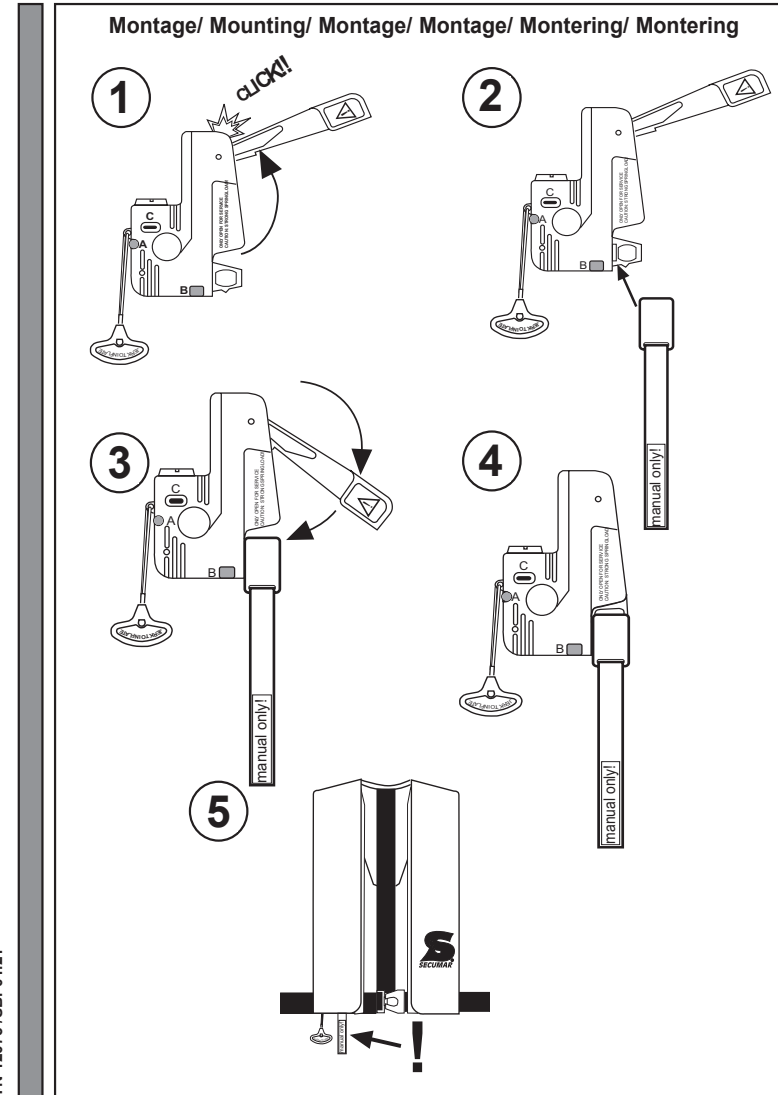
### Let op:

Door het plaatsen van de automaatblokkering wordt de functie van het automatisch opblaassysteem **SECUMATIC 3001S** beperkt tot alleen handbediening. Dit betekent; het opblazen van het reddingsvest kan nu uitsluitend geactiveerd worden door aan de handbediening te trekken.

### Obs:

Ved brug af den gule låseadapter i **SECUMATIC 3001S**, bliver den helautomatiske udløsermekanisme blokket. Det betyder at redningsvesten kun er halvautomatisk og kun kan oppustes ved at trække håndudløseren.

TN 12075 /SBI-01.21

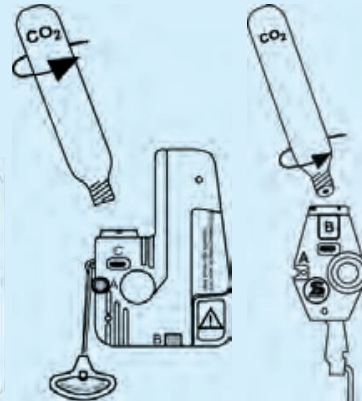


Gebrauchsanleitung - Instructions for Use - Mode d'emploi - Gebruiksaanwijzing - Bruksanvisning

SECUMAR®  
BERNHARDT APPARATEBAU GmbH u. Co.  
Bredhornweg 39 • 25488 Holm/Germany

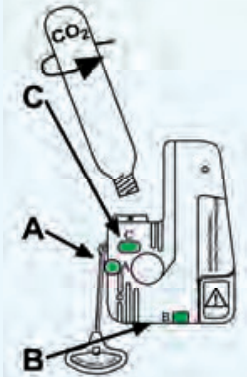


1

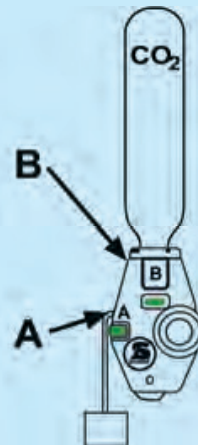
2

<b>A</b>		
<b>B</b>		
<b>C</b>		

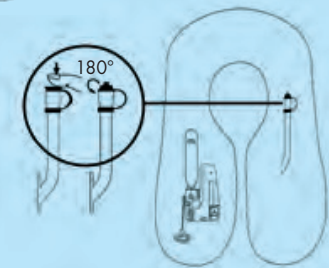
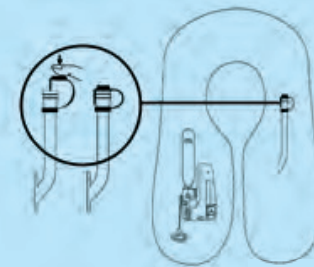


3

<b>A</b>		
<b>B</b>		

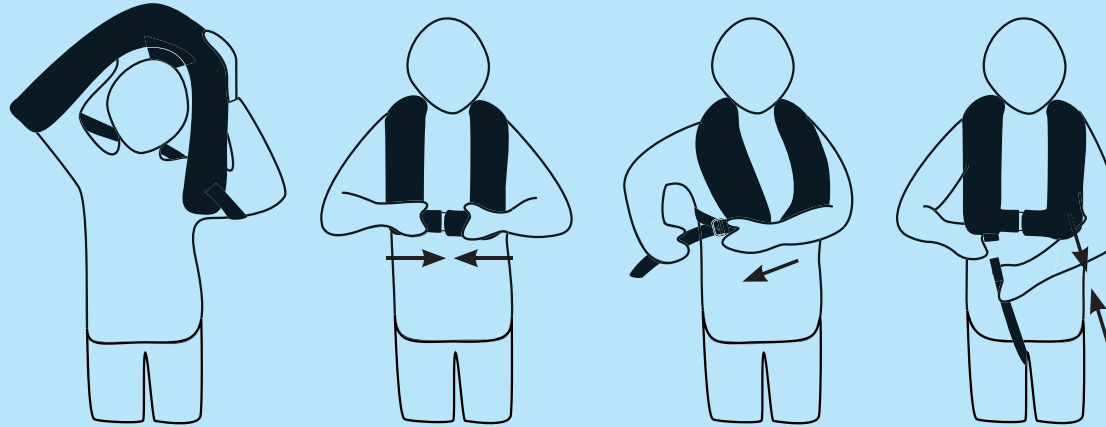


4

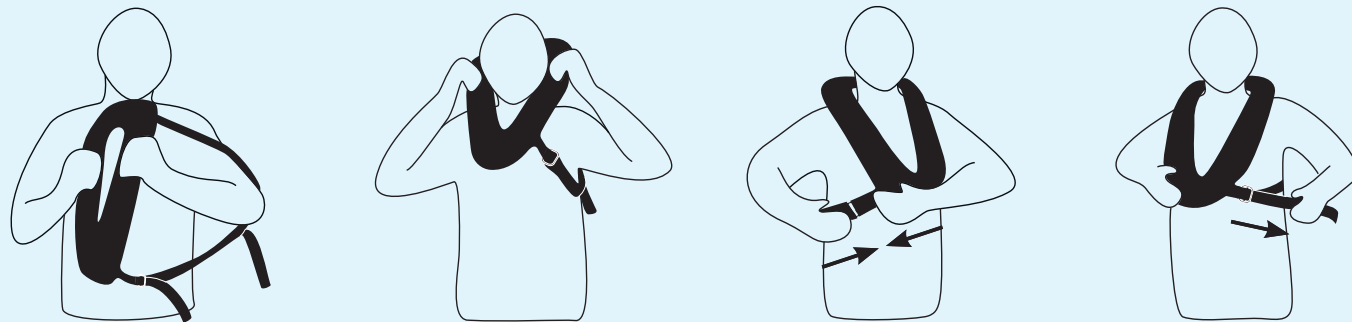




5

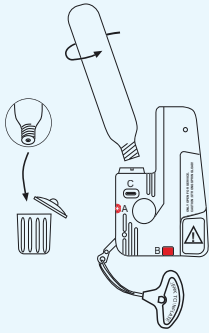


6

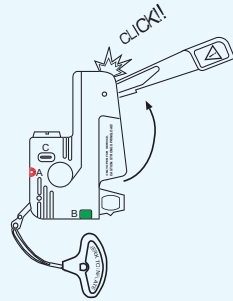




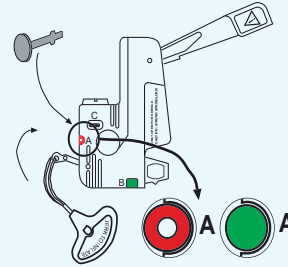
# 7



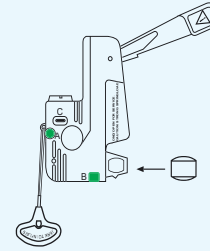
A	→	○
B	○	■
C	→	○



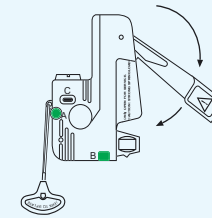
A	→	○
B	○	■
C	→	○



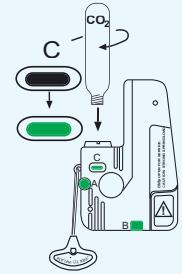
A	→	○
B	○	■
C	→	○



A	→	●
B	○	■
C	→	○

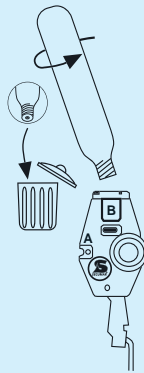


A	→	●
B	○	■
C	→	■

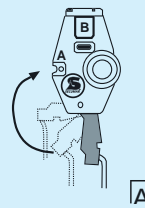


A	→	●
B	○	■
C	→	■

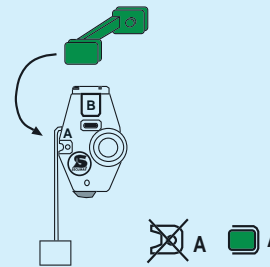
# 8



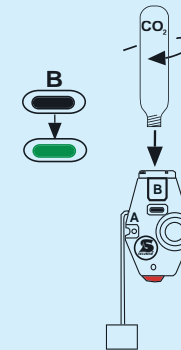
A	↗	⌚
B	→	○



A	↗	⌚
B	→	○



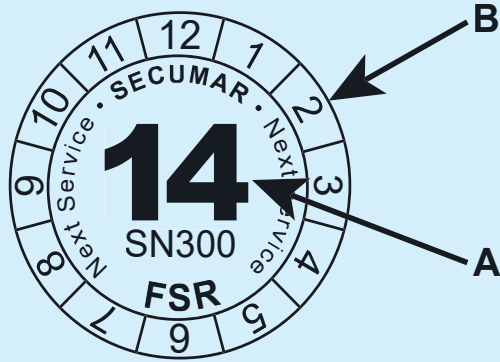
A	↗	⌚
B	→	○



A	↗	■
B	→	■



9



VISIT OUR WEBSITE:  
**WWW.SECUMAR.COM**

10

