

Pumpen von FYNspray

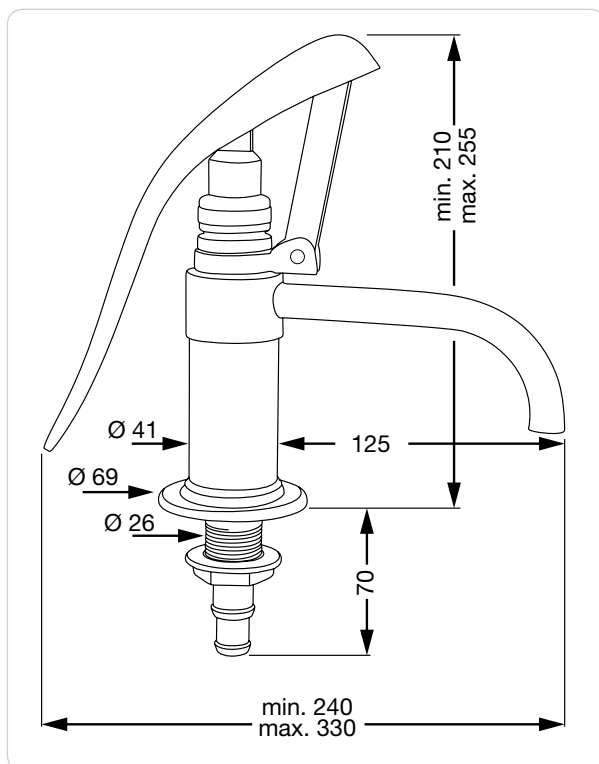
bereits seit 1946 produziert die neuseeländische Firma WHITE STAR PRODUCTS LTD hochwertige Pumpen und Wasserhähne für den maritimen Bereich. Durch die Übernahme der Produktion der Firma CLEVECO/MURRAY in den 1980ern sind noch Winschen und Bootsbeschläge in gleich hoher Qualität dazugekommen. Die Produkte sind aus seewasserbeständigen Materialien in Neuseeland gefertigt und weisen eine hohe Lebensdauer auf.

Kombüsenpumpe CLASSIC *FYNspray WS62*

Die klassische Pantrypumpe aus massivem Messing. Poliert oder verchromt. Übertisch-Modell, Pumpschwengel im Winkel beliebig verstellbar. Schlauchanschluss für 16 mm oder 19 mm Schlauch. Pro Hub fördert die Pumpe 0,08 Liter.

Nachdem sich herausgestellt hat das bei nicht regelmäßigem Gebrauch der Pumpe, das Pumpenleder durch Austrocknung am Pumpenkörper festkleben kann, wurde dieses durch eine Nitril Scheibe ersetzt.

Der Ersatzteilsatz (TOPLICHT Art-Nr. 4613-100) wird nur noch mit Nitril Scheibe (WS62/11A) geliefert. Ältere Pumpen benötigen einen Umrüstsatz (TOPLICHT Art-Nr. 4613-101) der aus einem Pumpen-Boden-Ventil (WS62/12A) und einem Gewinde-Ring (WS62/10A) besteht.



TOPLICHT Art-Nr.	Ausführung Typ WS62	FYNspray Art-Nr.
4613-014	CLASSIC Messing	WS62B
4613-514	CLASSIC verchromt	WS62C
4613-100	Ersatzteil-Satz	WS62/17A
4613-101	Umrüst-Satz für ältere Pumpen	WS62/22



TOPLICHT
 Art-Nr. 4613-014
 (WS62B)



TOPLICHT
 Art-Nr. 4613-514
 (WS62C)



TOPLICHT
 Art-Nr. 4613-100
 (WS62/17A)



TOPLICHT
 Art-Nr. 4613-101
 (WS62/22)



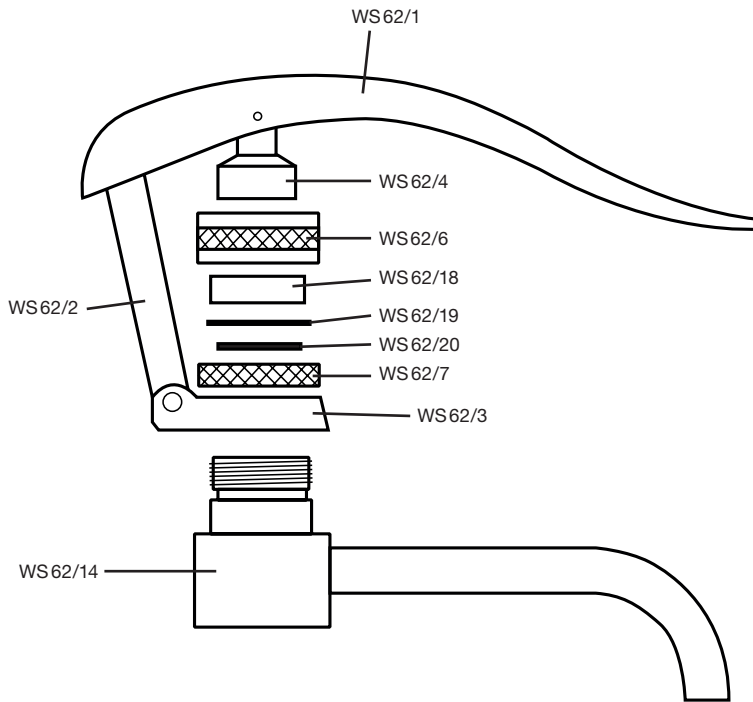
WS62 FYNspray
CLASSIC LEVER GALLEY Pump
Kombüsenpumpe CLASSIC

Ersatzteil Satz WS62/17A
TOPLICHT Art-Nr. 4613-100

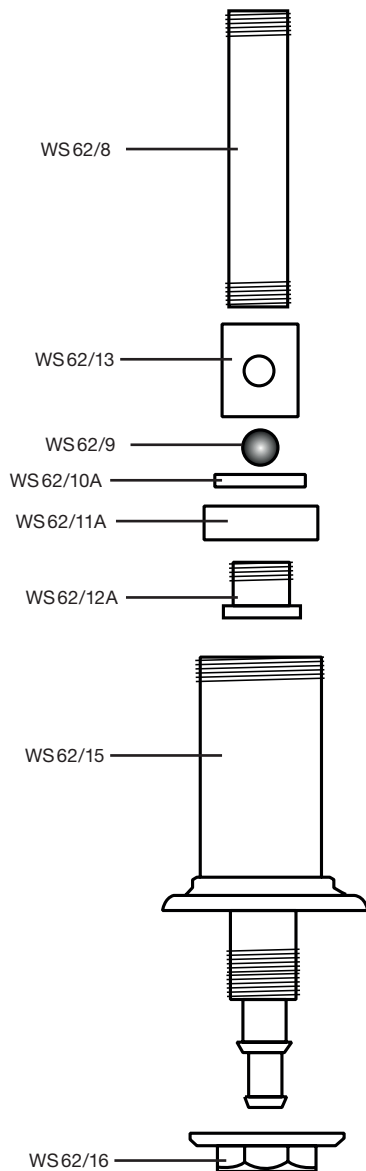


Umrüst Satz WS62/22
TOPLICHT Art-Nr. 4613-101





WS62 FYNSPRAY
 CLASSIC LEVER GALLEY Pump
 Kombüsepumpe CLASSIC



WS62 FYNSPRAY

FYNSPRAY Art-Nr.	English	Deutsch
WS62/1	HANDLE	Pumpenhebel
WS62/4	PLUNGER TOP	Kolbenrohr-Kopf
WS62/6	GLAND NUT	Stopfbuchsen-Ring
WS62/18	FELT PACKING	Filz Stopfbuchsen-Packung
WS62/19	BRASSWASHER	Messing-Scheibe
WS62/20	QUAD RING	QUAD Ring
WS62/7	COLLAR LINK RING	Feststellung für Hebelstangenführung
WS62/2	HANDLE LINK	Hebelstange
WS62/3	SWIVEL COLLAR	Drehbare Hebelstangenführung
WS62/14	SPOUT BODY	Auslauf
WS62/8	PLUNGER TUBE	Kolben-Rohr
WS62/13	PLUNGER VALVE BODY	Kolben-Ventil
WS62/9	VALVE BALL	Ventilkugel
WS62/10A	THREADED BACKING WASHER	Gewinde-Ring
WS62/11A	NITRILE WASHER	Nitril-Scheibe
WS62/12A	VALVE SEAT	Boden-Ventil
WS62/15	BARREL	Pumpen-Körper
WS62/16	FLANGE NUT	Flange-Mutter

Ersatzteilsatz WS62/17A TOPLICHT Art-Nr. 4613-100

WS62/18	FELT PACKING	Filz Stopfbuchsen-Packung
WS62/20	QUAD RING	QUAD Ring
WS62/11A	NITRILE WASHER	Nitril-Scheibe

Umrüstsatz WS62/22 TOPLICHT Art-Nr. 4613-101

WS62/10A	THREADED BACKING WASHER	Gewinde-Ring
WS62/12A	VALVE SEAT	Boden-Ventil

WS62 - Repair Instructions

Service Kitset: WS62/17

Please note:

After receiving feedback from you our distributors, White Star Products have carried out a small improvement to our WS62 Classic Brass lever pump.

Main concerns were the sticking problems associated to the drying out of the leather cup washer when the pump was used infrequently.

After experimentation and testing the decision was made to replace the leather cup washer with a Nitrile alternative as it provided improved pumping performance and alleviated the leather washer problems.

From June 2011 all WS62 Hand pumps will be supplied with „Nitrile rubber“ plunger washers.

We now offer a conversion kit (WS62/22) for retrofitting, upgrading the older leather washer versions.

The conversion kits WS62/22 consist of a Brass valve seat and backing washer.

All Service kits WS62/17A will now include the Nitrile cup washer.

Important:

To replace a leather cup washer version you will need both a conversion kit WS62/22 and a Service Kit WS62/17A

Leather cup washers will no longer be available after current stocks run out.

All new WS62 pumps will be supplied with the new Nitrile cup washer.

To fit the Conversion Kit (#10A & 12A)

Discard existing part #'s 10 & 12. Replace with new part #'s 10A & 12A.

N.B.

- 1) Make sure to fit part #11A first before threading part #10A hard up to shoulder of part #12A.
- 2) Use Loctite to attach valve seat to plunger.

To replace the leather plunger washer (#11) or nitrile plunger washer (#11A)

Unscrew the spout body & spout assembly (#14) from the barrel assembly (#15). (As sealant has been used on the thread, run the spout body under hot water and then tap it gently with a soft-headed mallet or a piece of soft wood. Place the pump vertically in a bench vice, gripping the barrel assembly below the flange.)

DO NOT use too much force on the spout & DO NOT use any tools as they may cause damage to the barrel. The complete handle & plunger assembly can now be removed. By holding the plunger valve body (#13) in a bench vice, the valve seat (#12) can be unscrewed, enabling the Leather or Nitrile cup washer to be replaced.

To replace the felt packing (#18) & quad ring (#20) on Mk 2 model

The complete plunger valve assembly must be removed from the plunger tube (#8). Take care when fitting the quad ring so as not to damage its inside edge.

If your pump is not leaking at the gland, there is no necessity to replace either of the above.