

# Bilge Accessories

## Deckplates

### Deckplates

#### A Comprehensive Range Of Bilge Pump Covers

- Provides a neat cover over manual bilge pumps
- Aesthetic designs
- Manufactured from UV Stabilised plastic
- Will not fade or discolour
- Snap-shut lid remains closed when pump is not in use

Deckplate Selector			
Product Code	Model	Materials	For Use With
DP8904	Plastic 4 Hole Model	PBT	Gusher® Urchin Gusher® Titan, Gusher® 10
DP3804	Metal 4 Hole Model	Cast and Aluminum LM6	Gusher® 10 Gusher® 30 (BP3020)
DP9905	Plastic 6 Hole Deck Ring	Acetal	Mk 5 Underdeck BP0535 / MH5560
DP9906	Plastic 4 Hole Covered Model	PBT	Mk5 Universal
AS0356	Plastic 4 Hole Model	PBT	Compac 50
AS3020	Includes DP3804+ Bridge Section	Cast and Aluminum LM6	Gusher® 30 (BP3020)

Note: These specifications are retail items only.

For details of our bulk pack range for boat builders and wholesalers - contact Whale Support.



DP8904



DP3804



DP9905



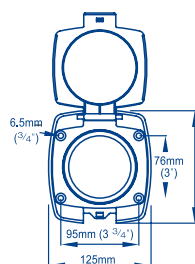
DP9906



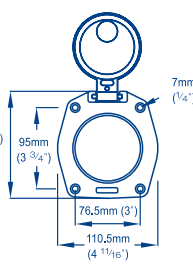
AS0356



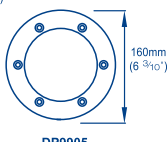
AS3020



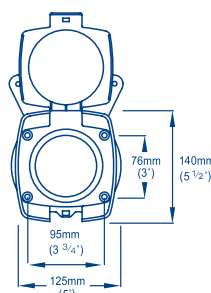
DP8904



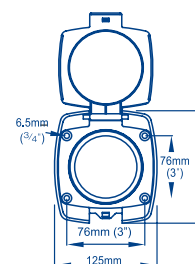
DP3804



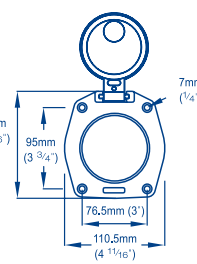
DP9905



DP9906



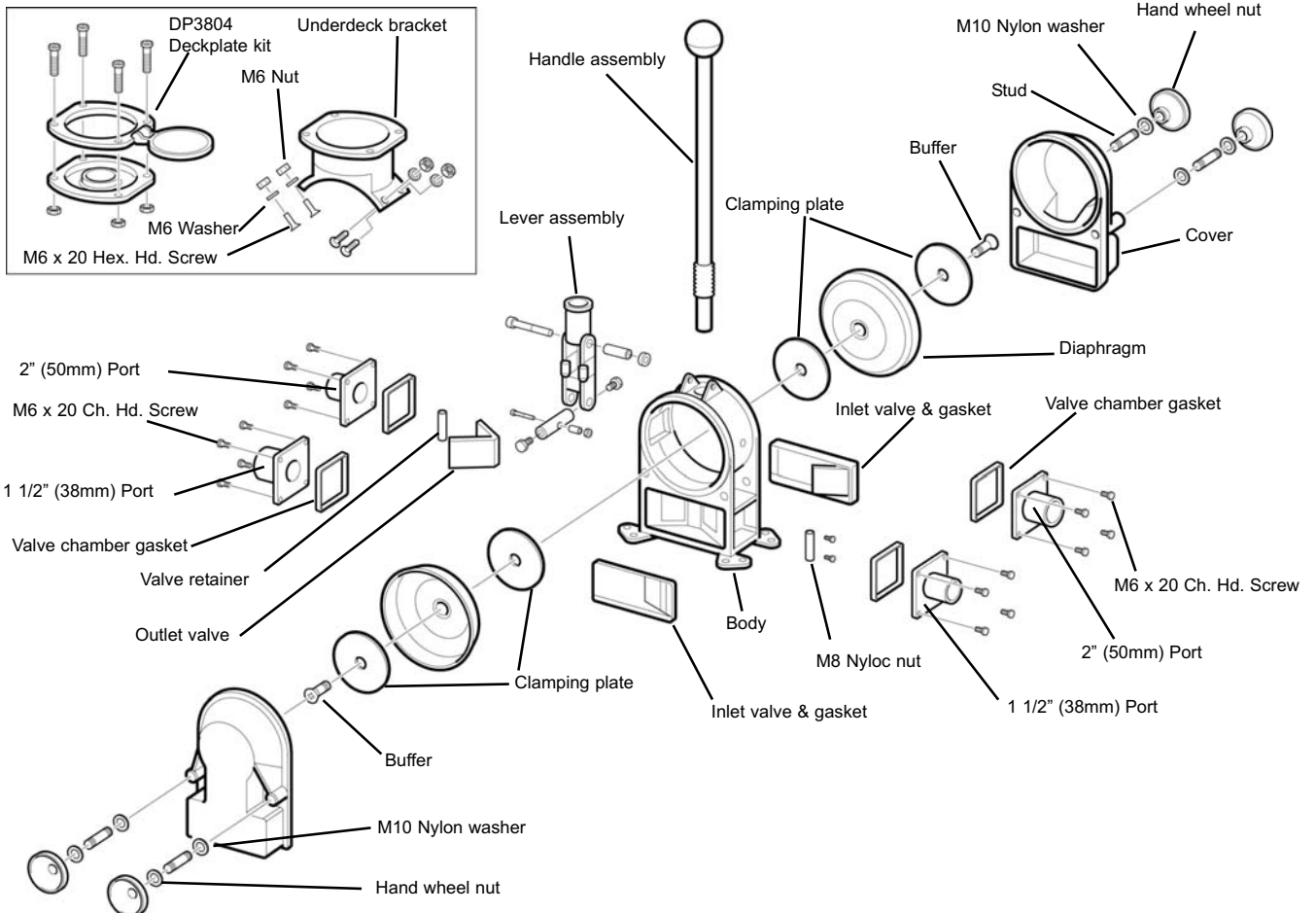
AS0356



AS3020

### To convert a deck mounting model (BP3000) to a bulkhead model (BP3010)

1. Remove covers and diaphragms.
2. Remove the fulcrum bolt by unscrewing the nyloc nut.
3. Remove the lever assembly and re-fit through the alternative aperture in the pump body.
4. Reposition fulcrum bolt, nyloc nut and tighten.
5. Reassemble diaphragms and covers.





## Manual Bilge Pumps

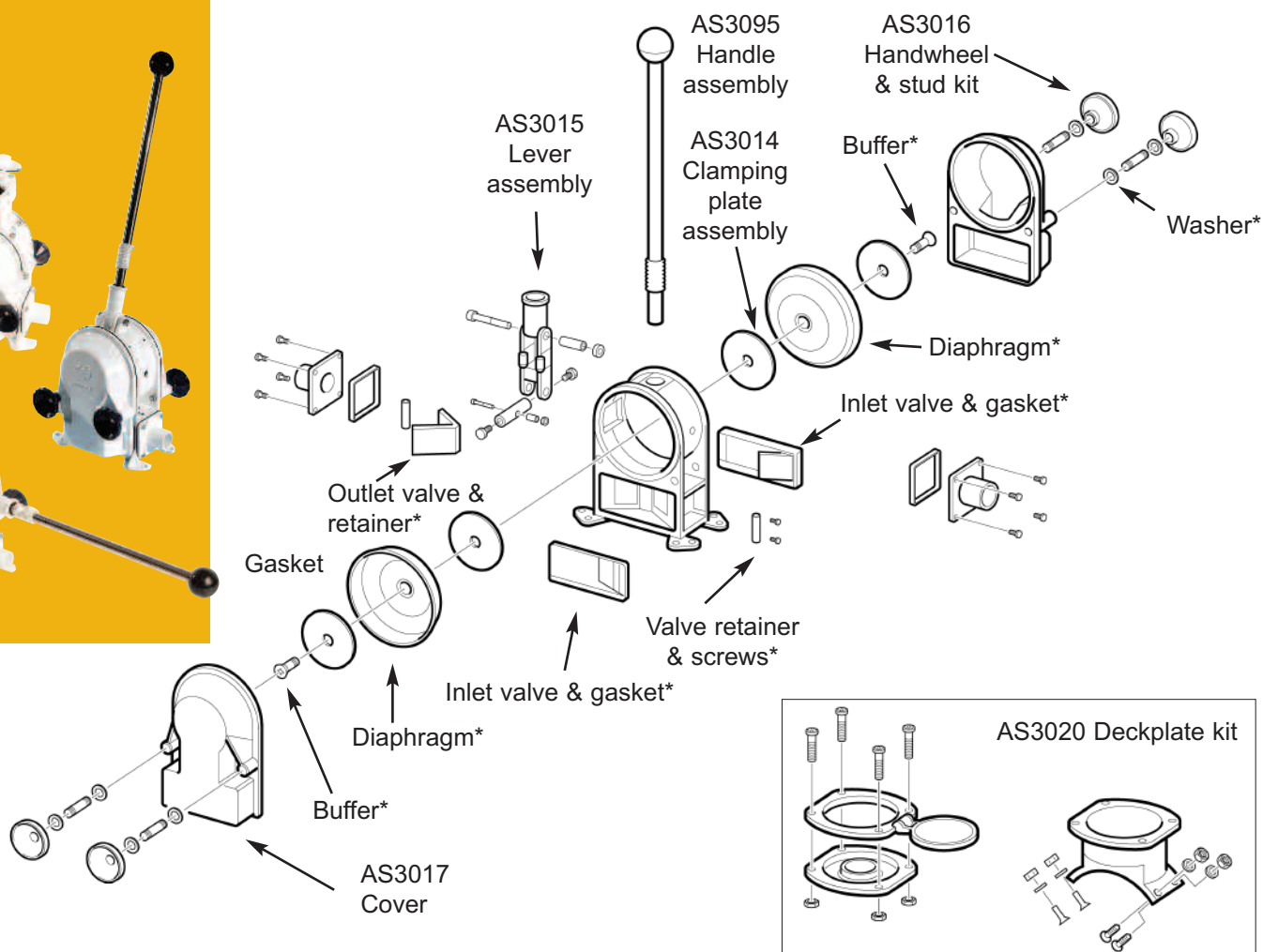
### Gusher® 30 Pump

**On Deck: BP3000, On Bulkhead: BP3010, Thru Deck: BP3020**

**Largest Capacity Manual Bilge Pump in the Whale Range**

CURRENT  
MODEL

**Note\*** Contained in Service Kit AK3051



#### Accessories

**AK3051 Thru Deck Conversion Kit**  
for BP3000

**AS3020 Deckplate Kit Assembly**

**AS3095 Spare Handle**

**DP3804 Deckplate**

#### Service Kits

**AK3051 Service Kit of  
Serviceable Parts for Whale  
Gusher® 30**

Qty	Containing
2	Screw No 6x11/4"
2	Diaphragm
2	Inlet valve & gasket
1	Outlet valve
2	Valve retainer
2	Valve chamber gasket
4	Washer nylon M10
2	Buffer

#### AS3015 Lever Assembly

Qty	Containing
1	Fork insert
1	Lever
1	Lever bush
2	Buffer
1	Nylon nut M6
1	Nylon nut M8
2	Clamping screw
1	Connecting rod
1	Connecting rod bush
1	Lever bush
1	Lever fulcrum bolt
1	Body fulcrum bolt

#### AS3016 Handwheel & Stud Kit

Qty	Containing
2	Nylon nut M8
2	Stud
2	Washer nylon M10
2	Hand wheel nut

#### AS3017 Cover Gusher® 30

Qty	Containing
1	Cover



## Manual Bilge Pumps

### Gusher® 30 Pump

**On Deck: BP3000, On Bulkhead: BP3010, Thru Deck: BP3020**

**Largest Capacity Manual Bilge Pump in the Whale Range**



AK3051



AS3014



AS3015



AS3016



AS3017



AS3020



AS3095



AS3725



DP3804

### Service Kits (Continued)

#### AS3725 Gaiter Kit for Deckplates

Qty	Containing
1	Gaiter (for metal or plastic deckplate)
1	O-ring (for metal deckplate)

#### AS3020 Deckplate Kit Assembly

Qty	Containing
4	Nut M6
1	Lid
1	Deckplate
1	O-ring (deckplate lid)
1	Nyloc nut M6
1	Gaiter
1	Underdeck bracket
4	Screw HEX HD M6x20
4	Screw M6x50

#### AS3014 Clamping Plate Kit

Qty	Containing
4	Clamping plates
2	Clamping screws
2	Buffers

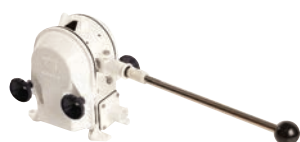
#### AS3095 Handle Assembly (Standard) s/s 450mm

## Gusher® 30

**GUSHER 30** is our largest capacity manual bilge pump. Manufactured by hand using high grade materials based on more than 60 years experience. The heavy duty Gusher 30 is ideal when long term durability and high performance is vital.



**Thru Deck**  
BP3020



**On Bulkhead**  
BP3010

**Long term reliability**  
fully protected diaphragms

Product code: see table



**Ease of use**  
easy grip handle

**Ease of operation**  
extra long handle

**Robust design**  
corrosion resistant, powder-coated,  
die-cast aluminium alloy

**Simple plumbing**  
38mm (1½")  
hose connections

**Efficiency**  
high capacity double acting pump

## Features and Benefits

- Maximum output
  - Delivering over 117 ltrs (31 US gals) per minute
- Efficient operation
  - Double acting pumps on both to and fro strokes
- Reliability
  - Twin diaphragms ensure pump continues working if one is damaged
- Durability
  - Powder coated diecast aluminium alloy
- Pumps oily bilge water
- No tools required for inspection and cleaning
- 3 mounting options
  - Available for deck, bulkhead or underdeck mount

### 5 Year Warranty

#### Tips

It is important to ensure that a vented anti-syphon loop is incorporated in the system

### Awards and Accreditations

- Pump accepted on some vessels for use as an emergency fire pump
- Suitable as a primary bilge pump on boats equal to or greater than 12 m (40ft) in accordance with ISO15083



### Life Boats Approval

- Approved by Lloyds (MCA) and USCG



### Product Information

#### Model Specifications

Model Product Code	On Deck BP3000	On Bulkhead BP3010	Thru Deck Only BP3020
Hose Connections	38 mm (1 1/2") Hose Connections		
Weight	5.05 kg (11.1 lbs)		5.9 kg (13 lbs)
Materials	Pump Body: Marine Grade LM6 Aluminium Alloy (epoxy coated) Diaphragm: Neoprene, Bushes: Acetal, Handwheels: Nylon Fasteners: Stainless Steel		
Materials In Contact With Fluid	Marine Grade LM6 Aluminium Alloy (epoxy coated) Nitrile* Stainless Steel		
Service Kit	<b>AK3051 - Service Kit for Gusher® 30</b> Contains: Diaphragms, Valves, Gasket <b>AS3725 - Gaiter Kit - for use with BP3020</b> <b>AS3016 - Handwheel / stud kit</b> <b>AS3015 - Lever Assembly</b>		
Accessories	<b>AS3095 - Spare Handle</b> <b>DP3804 Deckplate, AS3020 Deckplate Conversion Kit</b>		
Maximum Suction Lift	4 m (13.5 ft)		
Maximum Discharge Head	4 m (13.5 ft)		

#### Performance Data

	BP3000 / BP3010 BP3020	BP3000 / BP3010 BP3020	BP3000 / BP3010 BP3020
Suction Lift	0	1 m (3 ft)	2 m (6 ft)
Discharge Head	0.5 m (1.5 ft)	0.5 m (1.5 ft)	0.5 m (1.5 ft)
45 Strokes per Minute	75 ltrs (20 US gals)	71 ltrs (19 US gals)	71 ltrs (19 US gals)
70 Strokes per Minute	117 ltrs (31 US gals)	111 ltrs (29 US gals)	111 ltrs (29 US gals)

Note: These specifications are retail items only.

For details of our bulk pack range for boat builders and wholesalers - contact Whale Support.

\* If Neoprene diaphragm require please contact Whale Support

### COMPLETE YOUR SYSTEM

Whale high quality bilge accessories including non-return valves, elbows and Y pieces see page 48 - 51

